



# INTEGRATED STRUCTURAL BIOLOGY OF PROTEIN-RNA COMPLEXES IN GENE REGULATION AND IN RATIONAL DRUG DESIGN

GUEST LECTURE by



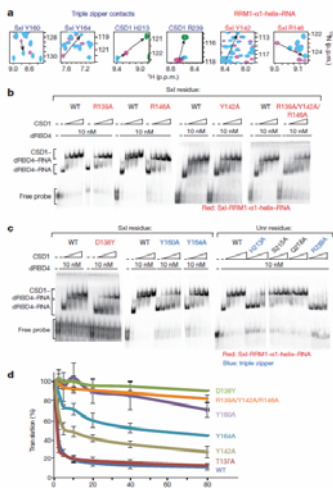
**Prof. Dr. Michael Sattler**

Institute of Structural Biology,  
Technical University of Munich, Germany

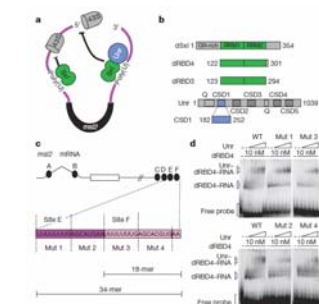
Friday, 26.06.2015

10:00

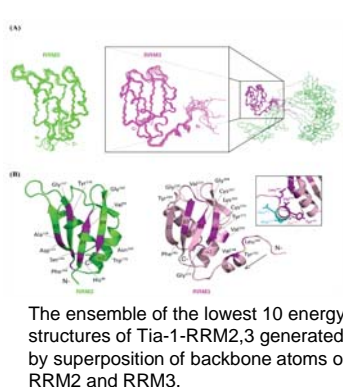
SR 07.11, Preclinics, MUG  
(Harrachgasse 21, 1<sup>st</sup> floor)



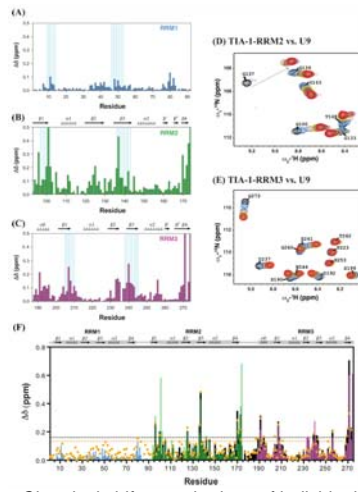
Ternary complex formation and functional analysis of molecular interfaces in the Sxl-Unr-*msl2*-RNA complex.



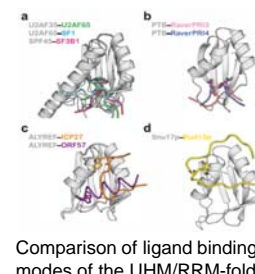
Analysis of Unr and Sxl binding to *msl2* mRNA. Hennig et al. (2014) Nature 515:287-92



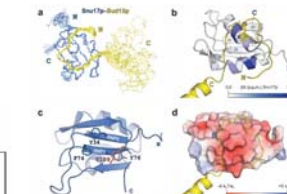
The ensemble of the lowest 10 energy structures of Tia-1-RRM2,3 generated by superposition of backbone atoms of RRM2 and RRM3.



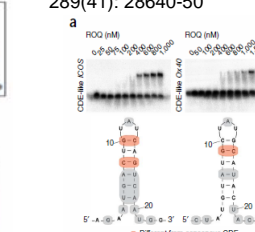
Chemical shift perturbations of individual TIA-1 RRM domains upon binding to U9 RNA. Wang et al. (2014) Nucl Acids Res 42(9):5949-66



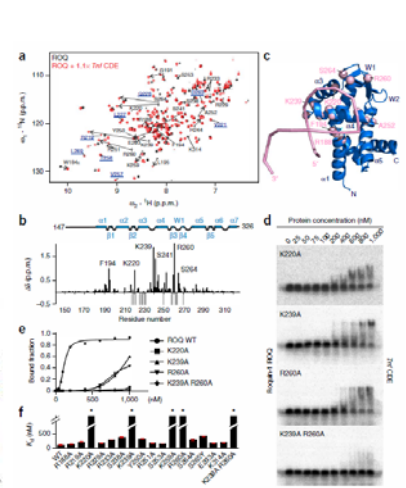
Comparison of ligand binding modes of the UHM/RRM-fold.



Structure of the Snu17p-Bud13p complex. Tripsianes et al. (2014) J Biol Chem 289(41): 28640-50



Functional analysis of CDE-like RNA variations. Schlundt et al. (2014) Nature Struct Biol 21(8):671-81



Mutational analysis of the ROQ-Tnf CDE RNA interface. Schlundt et al. (2014) Nature Struct Biol 21(8):671-81

